

# NGT THREAD SERIES

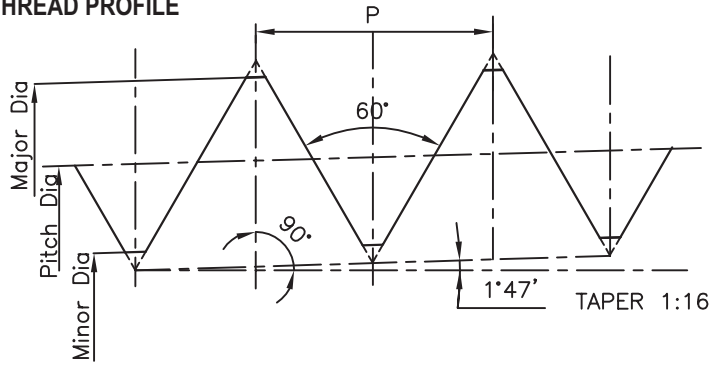
Application: Used for checking Gas cylinder valve stems and cylinder neck threads. (Taper 1 in 16)

## SPECIFICATION: (For Inspection gauges)

Handbook H-28 Part II – 1957.

\$ I.S. 9121 – 2005 for 3/4"-14 NGT size used for checking Type 1 (Size 2) threads of gas Cylinder valves.

## NGT THREAD PROFILE



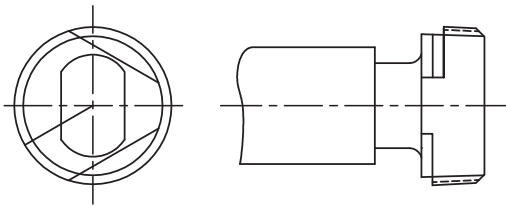
## MANUFACTURING RANGE

| Size               | Type of Gauges  |  |  |   |   |
|--------------------|---|--|--|---|---|
| 1/8-27 NGT         | Taper Thread Plug Gauges to check Pitch Diameter of cylinder neck.<br><br>Gauge L1 & Gauge L9 | Plain Taper Plug to check Crest Truncation of Minor Diameter.<br><br>Gauge C1 & # Gauge C2 | Taper Thread Ring Gauges to check Pitch Diameter.<br><br>Gauge L1 & Gauge L8 | Master Check Plug to check.<br><br>L1 & L8 ring | Plain Taper Ring to check Crest Truncation of Major Diameter. |
| 1/4-18 NGT         |   |  |  |   |   |
| 3/8-18 NGT         |   |  |  |   |   |
| 1/2-14 NGT         |   |  |  |   |   |
| 3/4-14 NGT \$      |   |  |  |   |   |
| 3/4-14 NGT (CI)-1* |   |  |  |   |   |
| 3/4-14 NGT (CI)-2* |   |  |  |   |   |
| 3/4-14 NGT (CI)-3* |   |  |  |   |   |
| 3/4-14 NGT (CI)-4* |   |  |  |   |   |
| 1-11.5 NGT         |   |  |  |   |   |
| 1.1/2-11.5 NGT     |   |  |  |   |   |

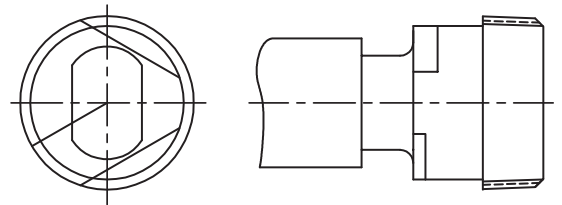
\*CI – Chlorine gas cylinder & valves.

## GAUGES

For checking Internal Taper Threads of Cylinder neck.

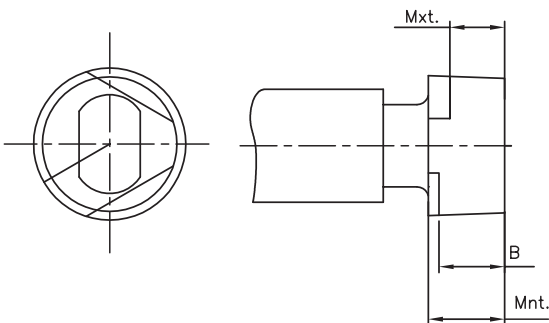


Thread Plug Gauge For Checking Pitch Diameter in Cylinder Neck L1

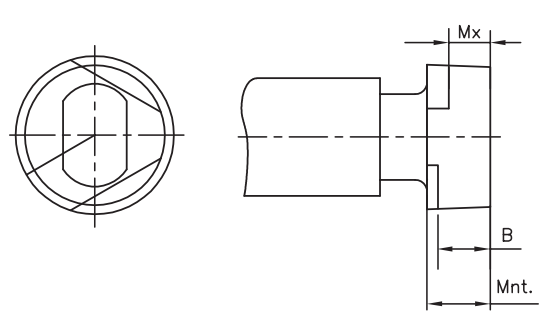


Full Form Taper Thread Plug Gauge For Checking Thread in Cylinder Neck L9

## Plain Taper Plug Gauge to check crest Truncation. #



Maximum Truncation Plain Taper Plug Gauge C1



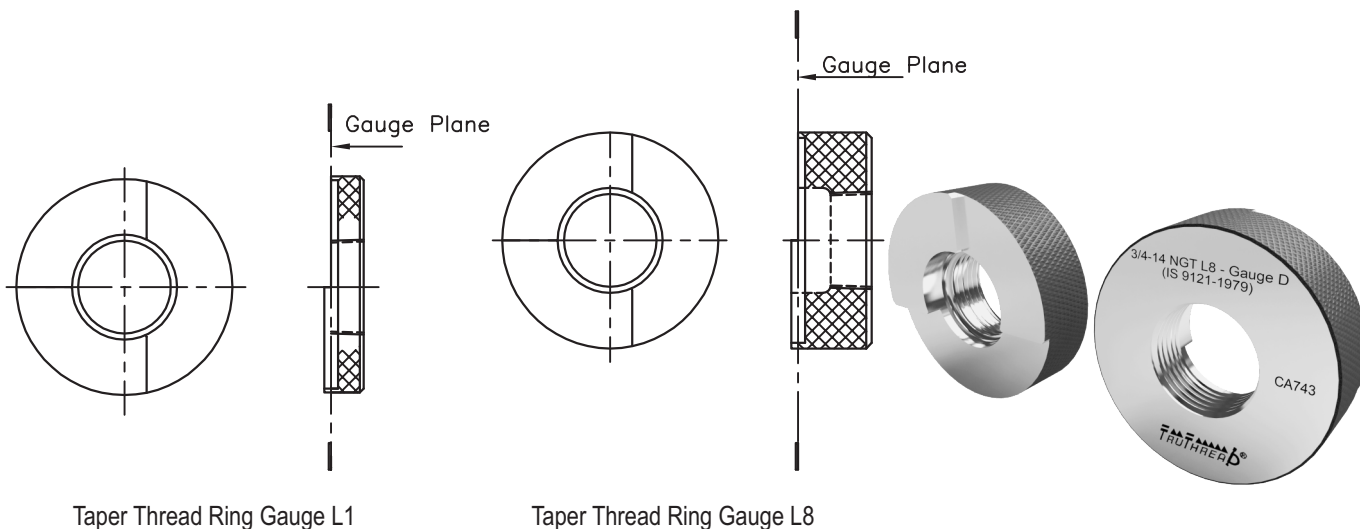
Minimum Truncation Plain Taper Plug Gauge C2

# IS 9121-2005 recommends only one Taper Plain Plug 'C' to check crest Truncation of Minor diameter.

# NGT THREAD SERIES

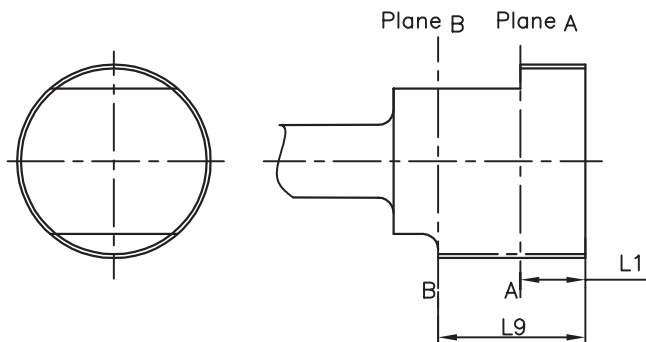
Application: Used for checking Gas cylinder valve stems and cylinder neck threads. (Taper 1 in 16)

For checking External Taper Threads of valve stem.



Taper Thread Ring Gauge L1

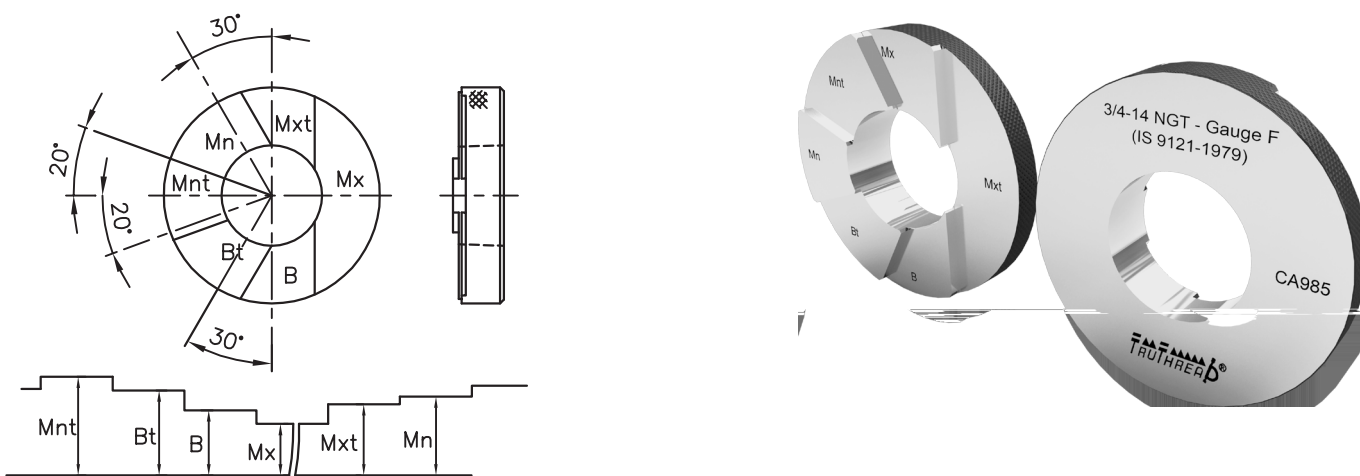
Taper Thread Ring Gauge L8



Master check plug to check rings L1 & L8.

## Plain Taper Ring Gauge to check crest Truncation.

\* IS 9121-2005 recommends Plain Taper Ring Gauge without any steps for checking crest Truncation.



Plain Taper ring Gauge for Checking Crest Truncations of External threads